

Helping All
Children
Succeed

EDUCATION

INSPIRE EQUIP IMAGINE

What to expect tonight:

INSPIRE

EQUIP

IMAGINE

A young woman with dark hair, wearing a bright pink sweater, is the central focus of the image. She is leaning forward, resting her chin on her hand, and looking directly at the camera with a gentle smile. The background is a classroom setting with several other students seated at desks, some of whom are blurred. A green chalkboard is visible in the background. The word "INSPIRE" is overlaid in large, white, bold, sans-serif capital letters on the left side of the image.

INSPIRE

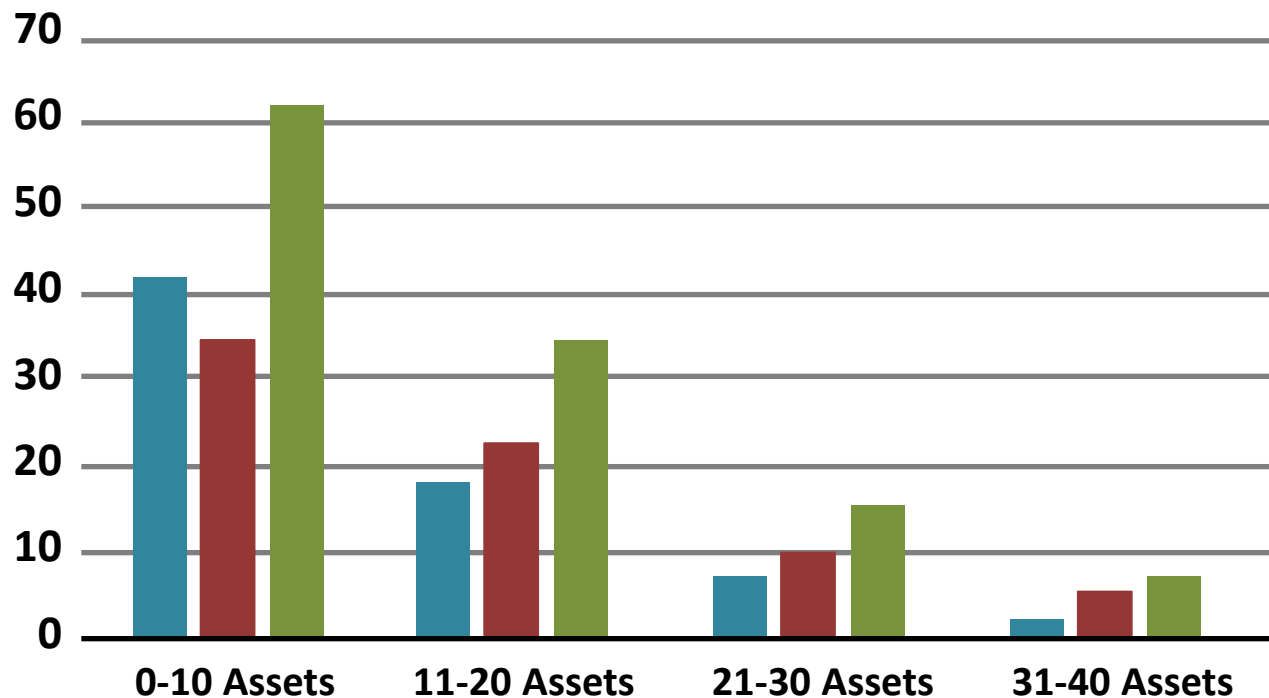
40 DEVELOPMENTAL ASSETS

- Common Language
- Research Based Tool
- FBISD History



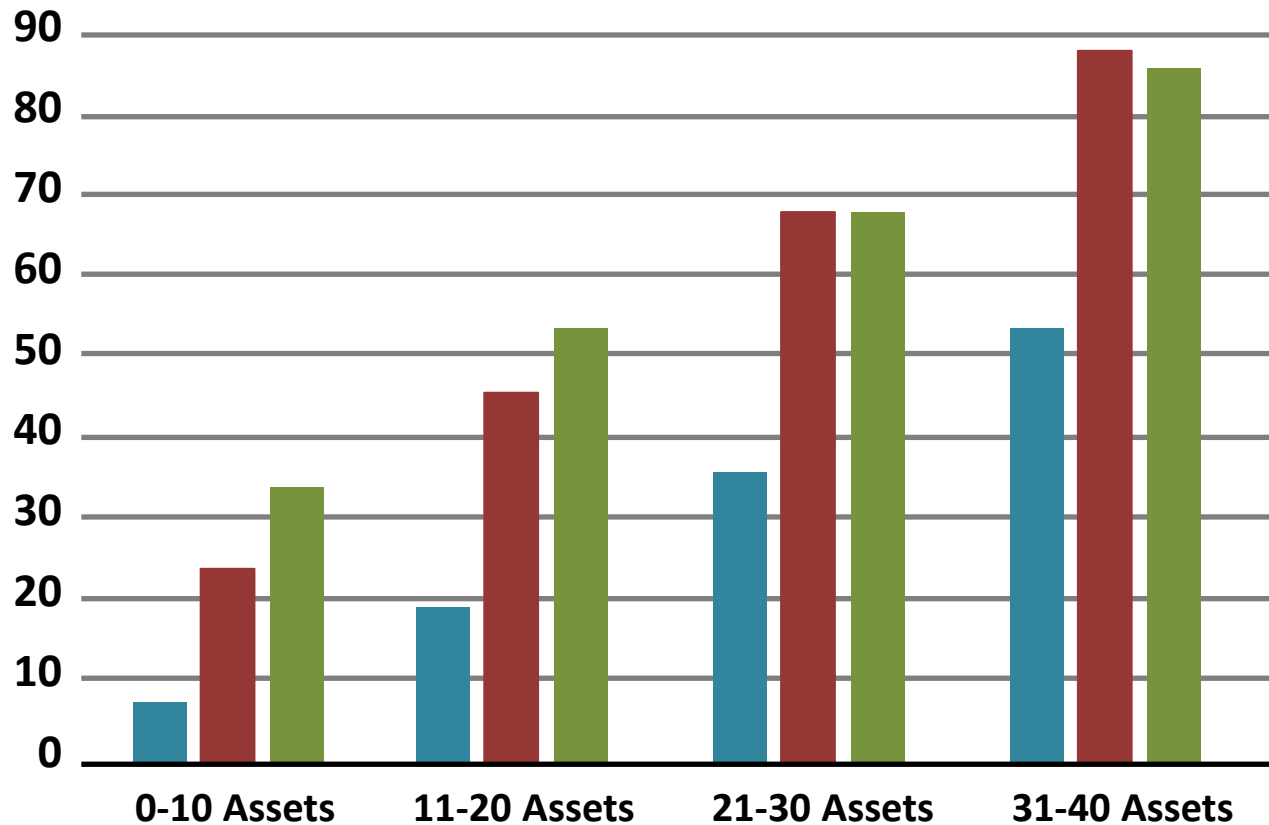
High-Risk Behaviors

Drugs Sex Violence



Positive Outcomes

School Health Diversity



40 DEVELOPMENTAL ASSETS

ACTIVITY

How many assets can
you influence?

<http://www.online-stopwatch.com/countdown-timer/>

The Power of Many

We need:

- Teachers/administrators
- Parents
- Community
- Business leaders



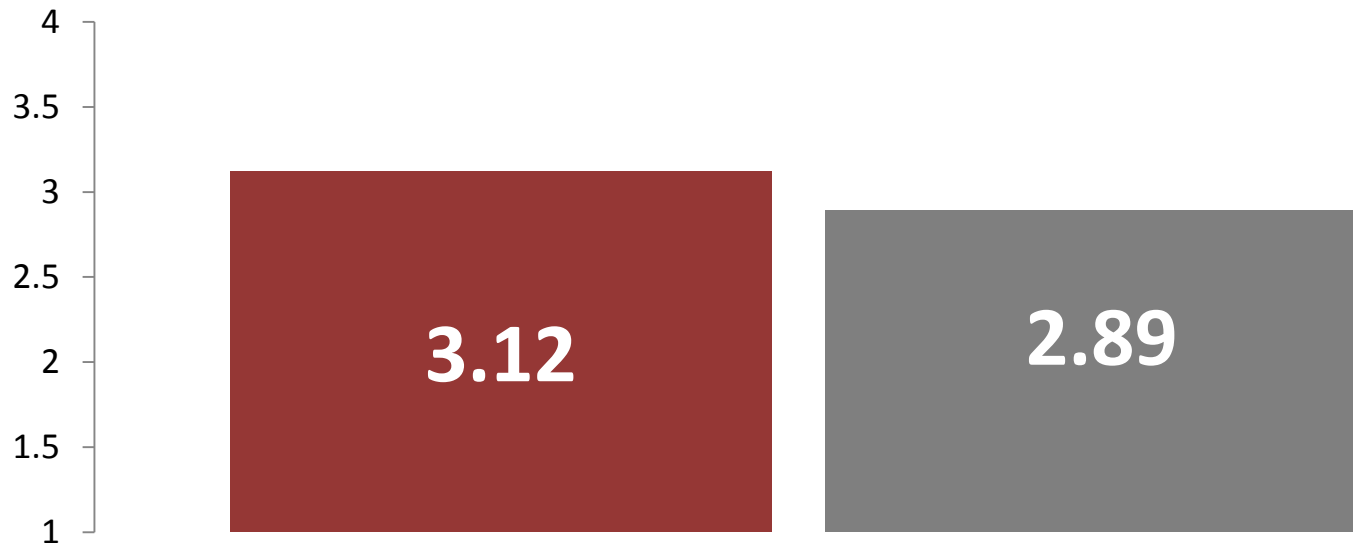
EQUIP

What is Student Engagement?

Student engagement is an essential component of successful and effective schools...

Overall Student Engagement

Overall engagement is determined from an average score across all survey items. Higher scores reflect stronger engagement.



**Overall Engagement
Average Score: 2.99**

■ Grades 6-8 ■ Grades 9-12

Student Engagement Focus Group Findings

- Most Favorite Thing about School



Student Engagement Focus Group Findings

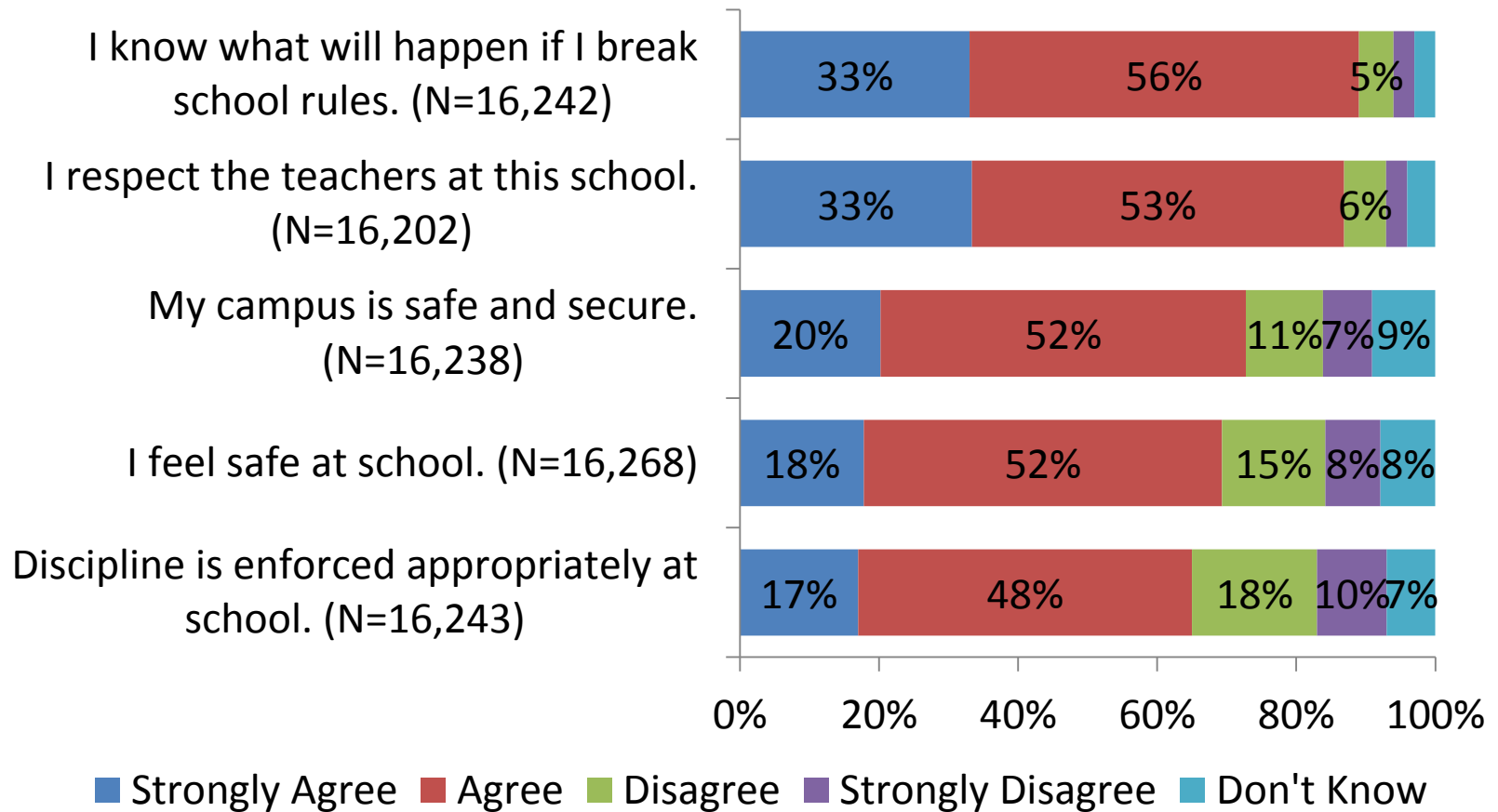
- Least Favorite Thing about School



Safety and Behavior

Agreement rates (Strongly Agree + Agree) range from 56% to 88%.

How strongly do you disagree or agree with each of the following statements?



ACTIVITY

How can schools better engage students in learning?

<http://www.online-stopwatch.com/countdown-timer/>

$$\begin{array}{l}
 P = 4x^2 - 3x + 2 \\
 Q = 6x^3
 \end{array}
 \left. \vphantom{\begin{array}{l} P \\ Q \end{array}} \right\} \rightarrow \begin{array}{r}
 P = 4x^2 - 3x + 2 \\
 \times Q = 6x^3 \\
 \hline
 P \cdot Q = 24x^5 - 18x^4 + 12x^3
 \end{array}$$

$$A - B = 5x^3 + 3x^2 - 6x + 12$$

$$\begin{array}{l}
 (x + 6)y = -5 \\
 (1) 2x + 5y = -1 \\
 3x - y = 7
 \end{array}$$

$$6(-2) - 3(3x + 15) = 4$$

$$-6x - 6 - 9x - 45 = 88 - 8$$

Attendance Process

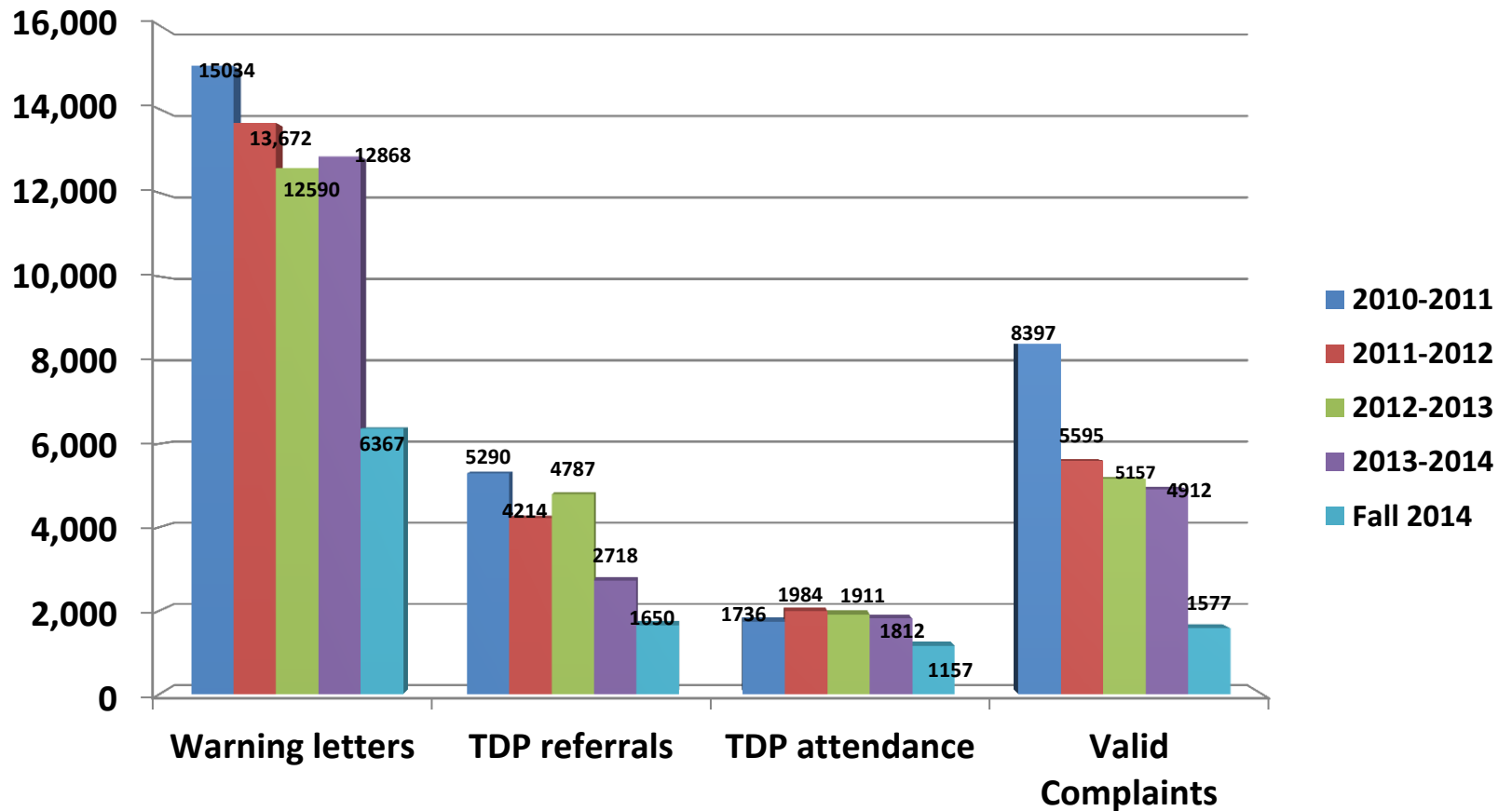


TRUANCY

Truancy – Any unauthorized or illegal absence from compulsory attendance.

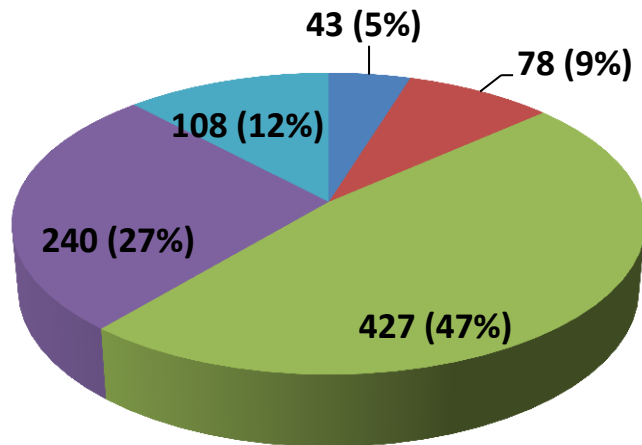
- **Compulsory attendance laws** require all children ages 6 to 17 to attend public or private school or to be home schooled. (Texas Education Code 25.093-25.095)
 - For students younger than 12 years, the parent could be charged with a truancy offense based on the student's failure to attend school.
 - For students 12-17 years, both the parent and student could be charged with a truancy offense.

TRUANCY DATA (COMPARISON OF 2010 – PRESENT)



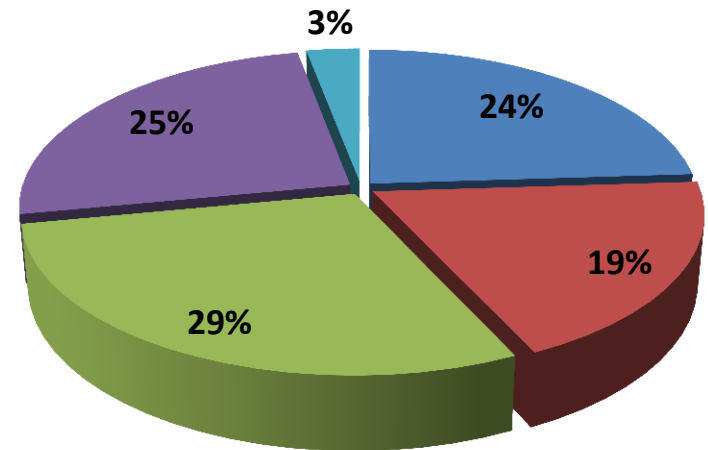
TRUANCY COMPLAINT RACIAL ANALYSIS

**Students Receiving
Truancy Complaint(s) in Fall 2014**



- Asian
- White
- Black
- Hispanic
- Not Indicated

**FBISD Student Race
Percentages**



ACTIVITY

Why do children miss school for reasons that are not excused?

<http://www.online-stopwatch.com/countdown-timer/>



DISCIPLINE

DISCIPLINE

2013-14 Percentage of Students Suspended In-School (Full or Part day) at Least Once

		All	AA	H	W	AS
FBISD	#	6931	3816	1888	680	370
	%	9.3	17.2	9.6	5.0	2.2
State	%	9.9	17.9	9.7	7.9	2.6

DISCIPLINE

FBISD 3-year Trends for % of Students Suspended In-School (Full or Part day) at Least Once

	All	AA	H	W	AS
11-12	11.6	20.1	12.0	6.8	3.3
12-13	10.7	19.1	11.2	5.9	2.7
13-14	9.3	17.2	9.6	5.0	2.2
Change	-2.3	-2.9	-2.4	-1.8	-1.1

DISCIPLINE

2013-14 Percentage of Students Suspended Out-of-School at Least Once

		All	AA	H	W	AS
FBISD	#	4179	2658	958	310	150
	%	5.6	12.0	4.9	2.3	0.9
State	%	4.6	11.6	4.4	2.4	0.9

DISCIPLINE

FBISD 3-year Trends for % of Students Suspended Out-of-School at Least Once

	All	AA	H	W	AS
11-12	8.0	16.5	7.4	3.3	1.3
12-13	6.5	13.6	6.0	2.8	1.0
13-14	5.6	12.0	4.9	2.3	0.9
Change	-2.4	-4.5	-2.5	-1.0	-0.4

DISCIPLINE

2013-14 Percentage of Students Placed or Expelled to a Disciplinary Alternative Education Program (Current Year or Continuation of Previous Year)

		All	AA	H	W	AS
FBISD	#	832	496	218	71	30
	%	1.1	2.2	1.1	0.5	0.2
State	%	1.5	2.8	1.5	1.0	0.2

DISCIPLINE

FBISD 3-year Trends for % of Students Placed or Expelled to a Disciplinary Alternative Education Program (Current Year or Continuation of Previous Year)

	All	AA	H	W	AS
11-12	0.9	1.7	1.0	0.4	0.2
12-13	1.0	1.8	1.1	0.5	0.2
13-14	1.1	2.2	1.1	0.5	0.2
Change	0.2	0.5	0.2	0.1	0.0

ACTIVITY

What do you notice on
data about discipline?

<http://www.online-stopwatch.com/countdown-timer/>



IMAGINE



Just IMAGINE...

Cassarian Engeri?

All the children are well!

ACTIVITY

What can we do to help
all children succeed?

<http://www.online-stopwatch.com/countdown-timer/>